

Egyptian Company For Supplies

**Compressed
Air Systems**

**Boiler Rooms &
Steam Networks**

**Water &
Wastewater
Treatment**

**Steel
Fabrication**

**Energy
Management**



Dear Sirs,

We would like to introduce our services regarding the pipelines , compressed air systems , water treatment, boilers and steam networks installations and services.

We hope that we introduce our services in this letter clearly to meet your requirements and looking forward to meet you for a complete presentation about *ESTC* and our scope of work

We appreciate the opportunity of doing business with you.

Sincerely,

Ahmed Ismail

Chairman

About *ESTC*

Since foundation in 1985 we provide our best services in industrial and water treatment fields and we are continuously expanding to provide integrated solutions and services in the industrial field, combining the experts designs and professional installing techniques.

Milestones

GARNO MISR

- Water treatment Plants (sewage, industrial & drinking water)
- Steam Networks

1985

GANOXI EGYPT

- Developed water treatment technologies with electro-coagulation system .
- Compressed Air Systems

2002

ESTC

- New scope in compressed air stations & pipelines
- GEF system for water treatment
- Fire Fighting Sys.

2008

ESTC services

***ESTC* provides a range of industrial services, from design to commissioning and project handover, including:**

- Compressed air systems.
- Water supply systems.
- Water and wastewater discharge systems.
- Firefighting systems.
- Boilers and steam networks.

Additionally, *ESTC* also offers:

- Complete solutions for water and wastewater treatment
- Chemical supply
- Regular maintenance and testing of pipe networks and compressed air utilities.

Focusing on the installation services ensures that we avoid all the defects that results from inexperienced technician, and inaccurate design to ensure the delivery of the projects according to the time schedule with no delays , less cost and best quality.



Compressed Air System

Specifications
analysis

Detailed
Engineering

Installation

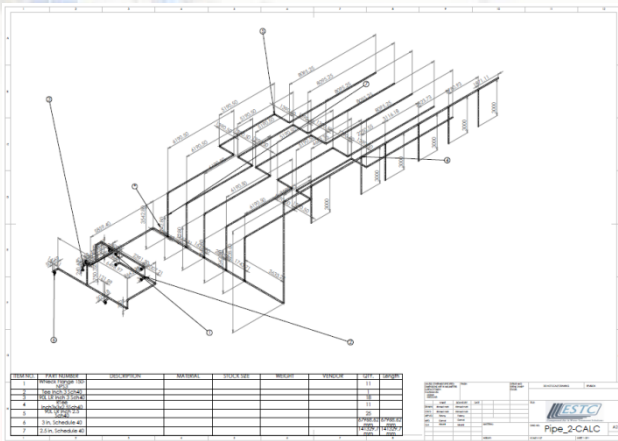
Testing & Startup

Specifications analysis

- Analyze and calculating the consumptions of the compressed air by the machines.
- Identifying the optimum pipeline path to reach all the required points of use taking into consideration the re-assembly of the line or making any extensions.



Detailed Engineering



- Selecting the required capacities of the compressor and the air treatment units.
- Selecting the optimum pipe diameter and wall thickness to ensure minimum pressure drop and lowest air velocity in the line.
- Identifying the location of the compressor room to allow the best ventilation for compressor and the compressed air treatment units.
- Designing all the necessary bypasses to ensure supplying the compressed air without stopping the production lines during maintenance.

- Presenting a detailed 2D & 3D Drawings for the pipelines and the compressor room with accurate dimensions taken from the site with Work Drawings and BOQ (Bill Of Quantities) clarifying the types of parts that will be installed.

Installation

- Presenting a work schedule to ensure delivering the project on time with best quality.
- The installation is done by skilled technicians with advanced tools according to international standards.



Testing and Start-up

- Performing a full test to the network to ensure no leakage and minimum Pressure drop.

ESTC Products

Pipelines

Black Steel & Galvanized Steel Pipes

ESTC is solo agent for **TIANJIN TIANYINGTAI GROUP** a leading Chinese company in the field of seamless and welded pipes, black steel and galvanized black steel certified ISO9001:2008 and BS OHSAS 18001:2007.



Stainless Steel Pipes

ESTC is solo agent for **MTSCO MAXTECH** a professional industrial piping system provider in the field of seamless and welded stainless steel pipes 304, 304L, 316 & 316L certified ISO9001:2015 also certified from EUROPEAN INSPECTION AND CERTIFICATION COMPANY S.A (EURO CERT).



Aluminum Pipes (INFINITY SYSTEM)

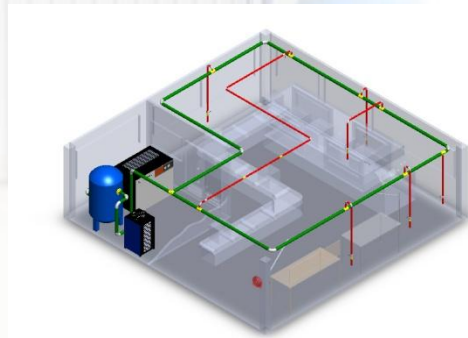
ESTC is the supplier of **INFINITY AIGNEP**, Italian calibrated aluminum tubes with brass push in fittings with NBR seal and steel clamping washer.



ESTC Products

Compressors

- Low pressure Screw Compressor
- Screw Air Compressors
- Oil Free Compressors
- Piston Compressors



Air Treatment Units

- Refrigeration air dryers
- Adsorption air dryers
- Aftercoolers
- Filters
- Condensate separators
- Water oil separators
- Auto Drains



Powering Your Operations: Boiler Rooms

At **ESTC**, we provide comprehensive solutions for efficient and reliable steam generation and distribution. Our expertise encompasses the design, installation, fabrication, commissioning, and start-up of high-quality boiler room components and sophisticated steam networks, tailored to meet the diverse needs of industrial and pharmaceutical applications. We are committed to delivering robust, safe, and energy-efficient systems that power your critical processes.

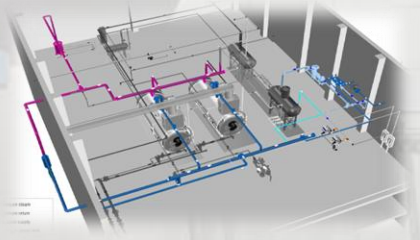
Design

Installation

Commissioning &
Startup

Boiler Room Components & Installations (Design)

- Customized boiler room layouts for optimal space utilization and workflow.
- Detailed engineering drawings and specifications adhering to relevant industry standards and safety regulations.
- Selection of appropriate boiler types (e.g., fire tube, water tube) based on application requirements.
- Integration of energy-efficient technologies and heat recovery systems.
- Consideration of fuel type, emissions control, and future expansion needs.
- Compliance with local codes and environmental regulations.



Boiler Room Components & Installations (Installation)

- Professional and certified installation teams ensuring adherence to strict quality and safety protocols.
- Precise placement and alignment of boilers and associated equipment.
- Expert piping and valve installations for fuel, water, and steam lines.
- Electrical wiring and control system integration.

Powering Your Operations: Boiler Rooms

Boiler Room Components & Installations (Fabrication)

- In-house or partnered fabrication of key boiler room components such as:
 - Feedwater tanks and systems.
 - Blowdown vessels.
 - Deaerators.
 - Chemical dosing systems.
 - Headers and manifolds.
 - Platforms and access structures.
- Utilization of high-quality materials and welding procedures.
- Rigorous quality control and inspection throughout the fabrication process.
- Custom fabrication to meet specific project requirements and space constraints.



Boiler Room Components & Installations (Commissioning & Start-up)

- Systematic verification of all installed equipment and components against design specifications.
- Calibration and testing of instrumentation and control systems.
- Pressure testing of boiler and piping systems to ensure integrity.
- Flushing and cleaning of water and steam circuits.
- Initial firing of the boiler and adjustment of combustion controls for optimal efficiency.
- Comprehensive safety checks and interlock testing.
- Operator training on system operation, maintenance, and safety procedures.

Steam Networks (Industrial & Pure Steam)

Efficient and reliable distribution of steam is crucial for various industrial processes and sterile applications. We design, install, commission, and start-up both industrial and pure steam networks tailored to specific needs.

Design

Installation

Commissioning &
Startup

Steam Networks (Design)

- Detailed piping layouts and stress analysis to ensure safe and efficient steam transport.
- Selection of appropriate pipe materials, insulation, and jointing methods based on steam pressure, temperature, and purity requirements.
- Integration of control valves, pressure reducing stations, and condensate recovery systems.
- Design considerations for minimizing heat loss and maximizing energy efficiency.
- Specific design considerations for pure steam networks, including sanitary design, material traceability, and prevention of contamination.



Steam Networks (Installation)

- Experienced teams specializing in the installation of both industrial and pure steam piping systems.
- Precise welding and jointing techniques to ensure leak-free operation.
- Proper insulation to minimize heat loss and maintain steam quality.
- Implementation of hygienic installation practices for pure steam networks.

Steam Networks (Industrial & Pure Steam)

Steam Networks (Commissioning & Start-up)

- Verification of pipe routing, supports, and insulation integrity.
- Pressure testing of the entire steam network to identify and rectify any leaks.
- Flushing and cleaning of the steam lines to remove debris and contaminants.
- Calibration and testing of control valves, pressure reducing stations, and instrumentation.
- Gradual introduction of steam into the network, monitoring pressure and temperature.
- Verification of condensate return system operation.
- For pure steam networks: steam quality testing.
- Operator training on steam network operation, control, and maintenance.

Delivering Reliable Steam Solutions, from Conception to Operation



WasteWater Treatment

For more than 30 years **ESTC** & **GanOxi** enriched the market with innovative water, waste water and industrial water treatment solutions. We offer the state of the art water treatment solutions using grain, bio grain and electrodes systems.

Biological Treatment

Chemical Treatment

Electro-coagulation Treatment

From Design to Installation

Sample Analysis

Study of water sample report to reach the ideal treatment technique

Providing Solutions

Submitting recommended & alternative solutions

Design & Drawing preparation

Agreed techniques is presented with a full design for the plant with minimum civil works

Supplying & Installing

Delivering all equipment and tools on site and installation is carried out with our skilled technicians

Testing & training

Analyze the treated water to ensure treatment results and training for the plant operators on site

Commissioning & Start-up

Observing the treatment process at full capacity and under normal working hours



ESTC offers the required maintenance and supply all equipment for existed water treatment plant

Engineering

ESTC provide full engineering solutions including Control Panels, Actuators, Sensors and Valves (Plug & Play modules).

MPF is a subsidiary company from **ESTC** incharge for steel fabrication scope with different steel materials (Carbon steel, Stainless steel 304 & 316 and Galvanized Steel) designed & fabricated by professional team of engineers, technicians, fitters, machinery and certified welders.

By **MPF** quality team we can provide all fabricated products complies with ASME, LLOYDS, CE or any other manufacturing standards requested from the client.

Boiler Room Accessories

- Feed Water Tanks.
- Chimneys.
- Deariators.
- Blowdown Tanks.
- Condensate Tanks.



Custom Fabrication

- Double Jacket Tanks.
- Fuel Tanks.
- Mixer Tanks.
- Storage Tanks for any products.
- Multimedia filter steel Tanks for water treatment plants.
- Water treatment steel tanks complete with all needed accessories.
- Unpressurized Tanks.
- Pressurized Tanks.
- Support Structures.



Modules Fabrication

- Custom designs to meet client specifications.
- Heat Exchanger modules.
- Double Jacket lines.



Energy Management

Since foundation in 1985 we provide our best services in industrial and water treatment fields and we are continuously expanding to provide integrated solutions and services in the industrial field, combining the experts designs and professional installing techniques.

Inspection

Find leaks quickly and easily with Ultrasound technology

Leak Detection

Ultrasound leak detection covers a wide range of leaks: pressure or vacuum and any type of gas.

Sound dependent: ultrasound instruments detect the turbulent flow produced as the gas moves from the high-pressure side to the low-pressure side of a leak. Using the characteristics of Ultrasound, locating leaks is fast and easy to do so because of :

- Directionality of sound waves makes locating the source easy.
- Intensity of signal: the closer you get, the more sound you detect.
- Fixed frequency, making it effective to locate even in a loud factory environment!

In many facilities Ultrasound detection instruments are used for safety, environmental, energy or quality assurance programs:

- Compressed air costs money! Avoid energy loss by fixing your leaks .
- Industry average 31% of energy use can be avoided by just fixing leaks!
- Reduce running hours / wear and tear on existing equipment.
 - In many cases a lower spec or shut down of a compressor can be the result.
 - Cost avoidance, expensive to buy or produce.
 - Environmental impact of certain gasses.
 - Production efficiency.
 - Achieve better efficiency of the process.
 - Run pressures or vacuum pressures at desired levels.
 - Inspection efficiency & inspector safety.



ESTC Reference List

Water and Wastewater Treatment Projects:

- Sewage wastewater treatment plant 100 m³/day – New Assuit Aqueducts.
- Domestic water treatment plant 100 m³/day – New Assuit Aqueducts.
- Sewage wastewater treatment plant 1500 m³/day – New Giza Compound.
- Industrial wastewater treatment plant 50 m³/day – Misr Agricultural Development Factory – Sadat City.
- Operation supervision for mixed sewage and industrial wastewater treatment plant 2000 m³/day – Pepsi Factory – 6th of October City.
- Mixed sewage and industrial wastewater treatment plant 750 m³/day – Damietta Port.
- Sewage wastewater treatment plant 150 m³/day – El-Shaheed Ahmed Hamdy Tunnel – Sinai.
- Sewage wastewater treatment plant 350 m³/day – Amigo Resort – Ain El-Sokhna City.
- Sewage wastewater treatment plant 350 m³/day – Ramada Resort – Ras Sudr City.
- Sewage wastewater treatment plant 350 m³/day – Arora Resort – Zaafarana City.
- Mixed sewage and industrial wastewater treatment plant 4000 m³/day – Port Said Industrial Area.
- Water Desalination RO plant 1000 & 200 m³/day – 10th of Ramadan Industrial Zone.
- Industrial wastewater treatment plant 1000 m³/day – Milkis Farm – Nubaria City.
- Industrial wastewater treatment plant 20 m³/day – AIG Pharma Factory – Badr City.
- Industrial wastewater treatment plant 220 m³/day – Alumil Factory – 6th of October City.
- Deionizer Unit 240 m³/day – Alumil Factory – 6th of October City.
- Rehabilitation for Industrial wastewater treatment plant – ABB Factory – 10th of Ramadan City.

Compressed Air Projects:

- Piping Network in El-Nasr Factory for Chemicals – Abu Zaabal City.
- Piping Network in New Cairo Factory for Buses manufacturing – New Cairo.
- Compressor Room Installation in Ghabbour Auto service Center – Adabyya Suez.
- Piping Network in Nerhadu Pharma Factory – 6th of October City.
- Piping Network in Forbed Factory for mattresses – Obour City.
- Piping Network in Euromed Factory for medical industries – Free zone park.
- Piping Network in Oriental foods Factory – Free zone park.
- Piping Network in Pharma Care Factory – New Cairo.
- Piping Network in Military Printing center – Al-Gabal El-Ahmar.
- Piping Network in Kam-jet Textile Factory – Derza industrial zone – Beni Suef.
- Compressor Room in Wadi El-Nil Aluminum Factory – Obour City.
- Piping Network in Kardosha Stationary manufacturing factory – Port Said.
- Compressor Room in AIG Pharma Factory – Badr City.
- Piping Network in Alumil Factory – 6th of October City.
- Piping Network in Biogeneric Pharma Factory – 10th of Ramadan City.
- Piping Network in El-Wassem Aluminum Factory – Badr City.
- Piping Network in MEVAC 1 Factory – Al-Salhya El-Jadeeda.
- Compressor Room installation in MEVAC 1 Factory – Al-Salhya El-Jadeeda.
- Compressor Room installation in GHABBOUR Auto – El-Sadat City.

Steel Fabrication:

- Boiler Room Supplies – Mars Factory – 6th of October.
- Boiler Room Supplies – Grand Group Factory – Damietta City.
- Boiler Room Supplies – Otsoka Factory – 10th of Ramadan.
- Boiler Room Supplies – Biogeneric Pharma Factory – 10th of Ramadan.
- Boiler Room Supplies – Dakahliya Poultry – Sadat City.
- Heat Exchangers – Al-Nahda University – Beni Suef.
- Fuel Tanks – Beni Suef Power Station.

Industrial Utilities Projects:

- Exhaust Chimneys for Process Machines – Alumil Factory – 6th of October City.
- Water Supply Piping Network – Alumil Factory – 6th of October City.
- Firefighting Piping Network – Alumil Factory – 6th of October City.
- Firefighting Pump Station – Alumil Factory – 6th of October City.
- CO₂ Chambers – Alumil Factory – 6th of October City.
- Firefighting Pump Station – Beni Suef Cement Factory.
- Firefighting Pump Station – Biogeneric Pharma Factory – 10th of Ramadan.
- Steam Piping Network – Biogeneric Pharma Factory – 10th of Ramadan.
- Chilled Water Piping Network – Biogeneric Pharma Factory – 10th of Ramadan.
- Water Supply and Discharge Piping Network – Biogeneric Pharma Factory – 10th of Ramadan.
- Industrial Wastewater discharge Piping Network – Biogeneric Pharma Factory – 10th of Ramadan.
- Steam Piping Network – Mars Factory – 6th of October.
- Steam Piping Network – Farm Frites Factory – 10th of Ramadan.
- Steam Piping Network – Al-Amira Factory – 10th of Ramadan.
- Boiler Room Installation – Food Lovers Factory – Obour City.
- Boiler Room Installation – Biogeneric Pharma Factory – 10th of Ramadan.

Industrial Utilities Projects:

- Boiler Room Installations – Al- Nahda University – Beni Suef.
- Soft Water Network – Mevac 1 Factory – Al-Salhya El-Jadeeda.
- Pure & Industrial Steam Network – MEVAC 1 Factory – Al-Salhya El-Jadeeda

Energy Management:

- Leak Detection and Maintenance – El-Gawhara Factories – Bahaira.
- Leak Detection and Maintenance – Nerhadu Pharma Factory – 6th of October City.
- Leak Detection and Maintenance – Flat Glass Factory – 10th of Ramadan.

Head Office

2 Sherif Samy Street – 8th District – Nasr City –

Cairo, Egypt

Tel: +2 (010) 0 33 66 426

: +2 (012) 2 73 03 213

Office: +2 02 2270 12 63

admin@estcegypt.com

estc.eg@gmail.com

Contact us on our website

www.estcegypt.com

Follow us on



Egyptian Company for Supplies